

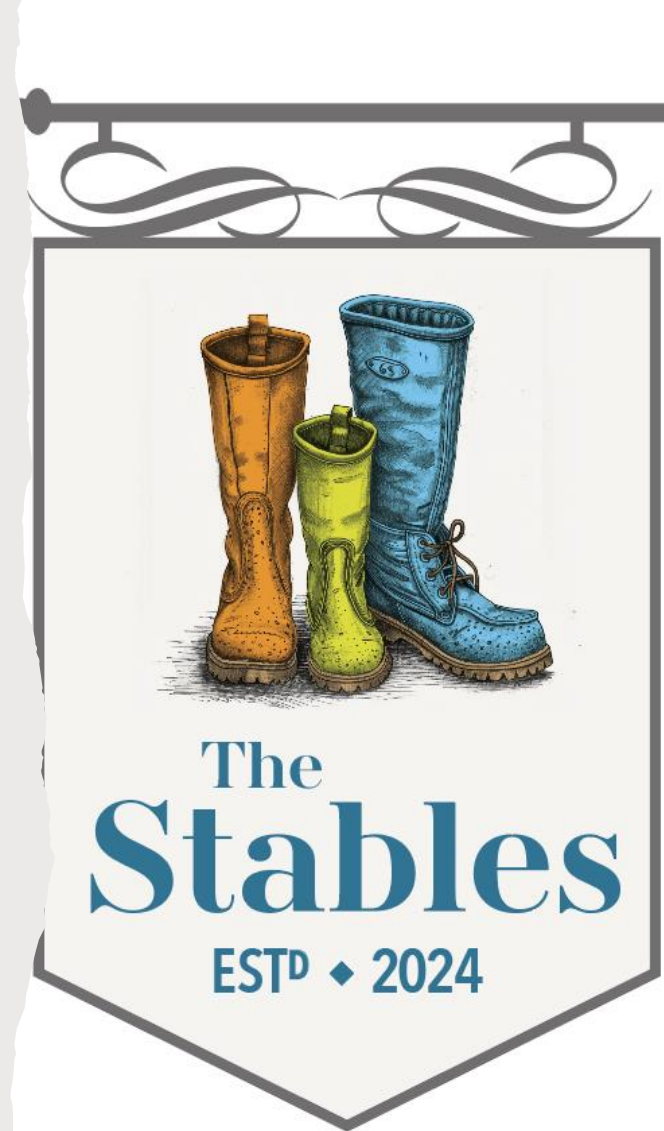


**Annual Parish Meeting  
24<sup>th</sup> April 2024**

**FOLLOW THE JOURNEY**

**HULLAVINGTON  
COMMUNITY CAFÉ AND PUB**

***AT THE HEART OF OUR VILLAGE***





- Why do we need this?
- Why the Stables?
- Why now?

- ✓ Our only opportunity
- ✓ Willingness to sell by owner
- ✓ Driven by the community
- ✓ Right size & great building
- ✓ Village gains an asset
- ✓ Others have been successful
- ✓ Aligns with other businesses
- ✓ Gives local opportunities

**Let's not say in the future ..... if only we had tried!!**

# What could stop this happening?

## **RISK of failure :**

- Change of mind by owner?
- Business case not compelling
- Funding application rejected
- Unknown, unknowns

## **MANAGING RISK of failure:**

- On-going discussions
- Following best practice
- Using Plunkett UK to advise
- Using volunteer expertise

**Hullavington Community Group working on behalf of our community**



## **Why will it be different this time?**

- Run for and managed by the community
- A place where everyone is welcomed
- A fabulous environment
- A safe haven for the vulnerable & lonely
- Offers local job opportunities
- Community asset run by professionals

***‘The Place to Go’ for locals, friends & visitors***

# Community vision – you told us, and we listened

**Welcoming,  
warm, &  
comfortable**

**Pop up events  
for community  
enjoyment**

**A fabulous  
community  
environment**

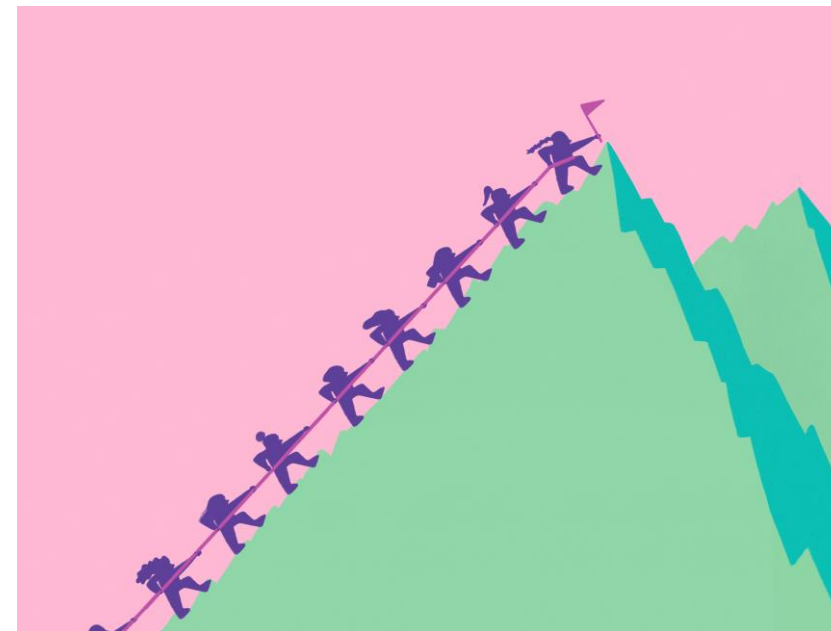
**Licensed Café  
& Pub**

**Great food and  
drink to enjoy**

***A place that our village is proud of***

# OUR EPIC JOURNEY IN 4 MONTHS!

- ✓ A dedicated, hard-working volunteer group
- ✓ Overwhelming support received
- ✓ Understanding community needs
- ✓ Great design and environment planned
- ✓ Engaging with local suppliers
- ✓ Great progress made on match funding
- ✓ On track for submission of business case



**Seeking to improve village life**

# The Stables Value proposition

- Delicious, nutritious food
- Relaxing environment
- Value for money
- Great range of wine & beer
- Special themed events
- Food and drinks 'on the go'
- Kids welcomed & catered for
- Well stocked games cupboard
- Access to the community hub
- Dine in / take out options
- A 'wow' brunch – fun for all
- A place to meet friends

**Service with a smile – at all times!**

# Key dates

## **March 2024:**

- Formed Hullavington Community Society Ltd
- Passed the Expression of Interest stage
- Workstreams established
- Discussions with owner (on-going)

## **April 2024:**

- Valuation undertaken – report awaited
- Community Ownership Fund (COF) application and business plan (on-going)
- Refinement of the service proposition
- Achieved intensive consultancy support from Plunkett UK (now underway)

## **May 2024:**

- Submit the Community Ownership Fund application and business plan
- Finalise negotiations on purchase (subject to approval of funds)

## **August 2024:**

- Receive decision & update the community on next steps



# Community & Business Support & Pledges

Our match funding target is £95,000 & must be achieved to satisfy COF. At this stage we have:

- ✓ £1,800 from the Society's founding members
- ✓ £45,000 in share pledges from the Community
- ✓ £2,000 grant from the Parish Council

We hope for £5,000 from Chippenham & Villages Area Board and are awaiting a decision by Parish Council to pledge a further £20,000 from community funds.

**We are at a critical stage of needing more – so any help is beneficial.**

# Hullavington Community Benefit Society Limited

## Share Offer – be part of it!

**THIS OFFER WILL ONLY PROCEED IF THE SOCIETY IS SUCCESSFUL IN GETTING  
THE GRANT FROM THE COMMUNITY OWNERSHIP FUND**

**NO MONEY IS REQUIRED NOW**

Buying shares means you have a direct say in how the café & pub is run.

You will be helping to save a village amenity.

Minimum investment is £25.

Average pledge is £370

One member, one vote

# Hullavington Community Benefit Society Limited

A full prospectus will be available at launch

The share offer is likely to be open for 6 - 8 weeks

Anyone can buy shares - individual or organization

**You don't have to live in the Village**

We will be applying for The Community Shares Standard Mark

ensures clarity, honesty and transparency

Zero capital growth on share value

A modest interest payment can be made if funds allow

Members must be 18 and over

# How to help or find out more information?

- You can still complete the Survey
- Please pledge to buy share(s) – average pledge is £370
- Contact us to volunteer your services
- Look out for updates on the 'Save our Pub Website'
- Follow progress on Hullavington Happenings Facebook
- Sign up to the e-mail network group managed by Geraldine



**Save our pub:** <https://www.hullavingtonhall.org.uk/help-us-to-save-our-pub/>

**Contact:** [Hullavingtoncommunity@gmail.com](mailto:Hullavingtoncommunity@gmail.com)

**Facebook:** <https://www.facebook.com/groups/541329313005364>

**Link to survey:** <https://forms.gle/oGazNxZcx8zbnAho7>